



High Island V 270 Foot Jack-Up

General Description

Design	Marathon LeTourneau 82-SD-C
Year Built / Last Upgrade	1981 / 2013
Hull Dimensions	207 ft. x 176 ft. x 20 ft.
Spud Can Diameter	40 ft.
Legs (3)	394 ft. long triangular
Quarters Capacity	103 persons
Maximum Water Depth	270 ft.
Cantilever Envelope	40 ft. by 20 ft.
Maximum Variable Load (drilling)	Approx. 5,000 kips*

**depending on water depth and geographical location*

Drilling Equipment

Derrick	DSI 160 ft. x 30 ft. x 30 ft. derrick, static hook load capacity 1,000,000 lbs. with twelve lines
Drawworks	National 1320 UE, 2,000 HP rated input power, driven by two (2) GE 752 series DC motors, with Elmagco 7838 auxiliary electric brake
Rotary Table	National C-375, 37-1/2 in. driven by a GE 752 DC electric motor with two speed gear box
Top Drive	Varco TDS-3H, 500 short tons, 1,100 HP motor, maximum continuous torque 31,000 ft.lbs. with Varco PH-85 pipe handler
Pipe Handling	NOV ST-80 for handling tubular ranging from 4-1/2 in. to 8-1/2 in OD.
Mud Pumps	Two (2) National 12-P-160 triplex pumps 1,600 HP, each driven by two (2) GE 752 DC motors, rated to 5,000 psi working pressure.
Solids Control	Four (4) NOV Brandt VSM 300 shale shakers; one (1) MI Swaco Mongoose Pro 3 in 1 Mud Cleaner consist of Type 312 Desander with 3 x 12 in. cones and Type 10T4 Desilter with 10 x 4 in. cones

Storage Capacities

Liquid Mud	1,917 bbls. (including slug tanks)
Base Oil	406 bbls.
Safra Oil	406 bbls.
Drill Water	6,870 bbls.
Fuel	1,961 bbls.
Potable Water	920 bbls.
Bulk Mud	5,136 cu. ft.
Bulk Cement	3,424 cu. ft.

Power Equipment

Main Power	Four (4) Caterpillar 3512C diesel engines, 1,478 HP driving four (4) KATO 600 volts 1,101 KW AC generators
Power Dist.	Four (4) Ross Hill SCR Model 1850 SCR system, 1,200 KW each, 750 volts

BOP Equipment

BOP Stack	13-5/8 in. x 10,000 psi WP BOP stack consisting of one (1) Cameron Type U 10,000 psi double ram preventer, one (1) Cameron Type U 10,000 psi single ram preventer; and one (1) Cameron T-90 13-5/8 in. 5,000 psi WP annular preventer
BOP Handling	Four (4) Ingersoll Rand 25 tons hoist and trolley handling system with four lifting points

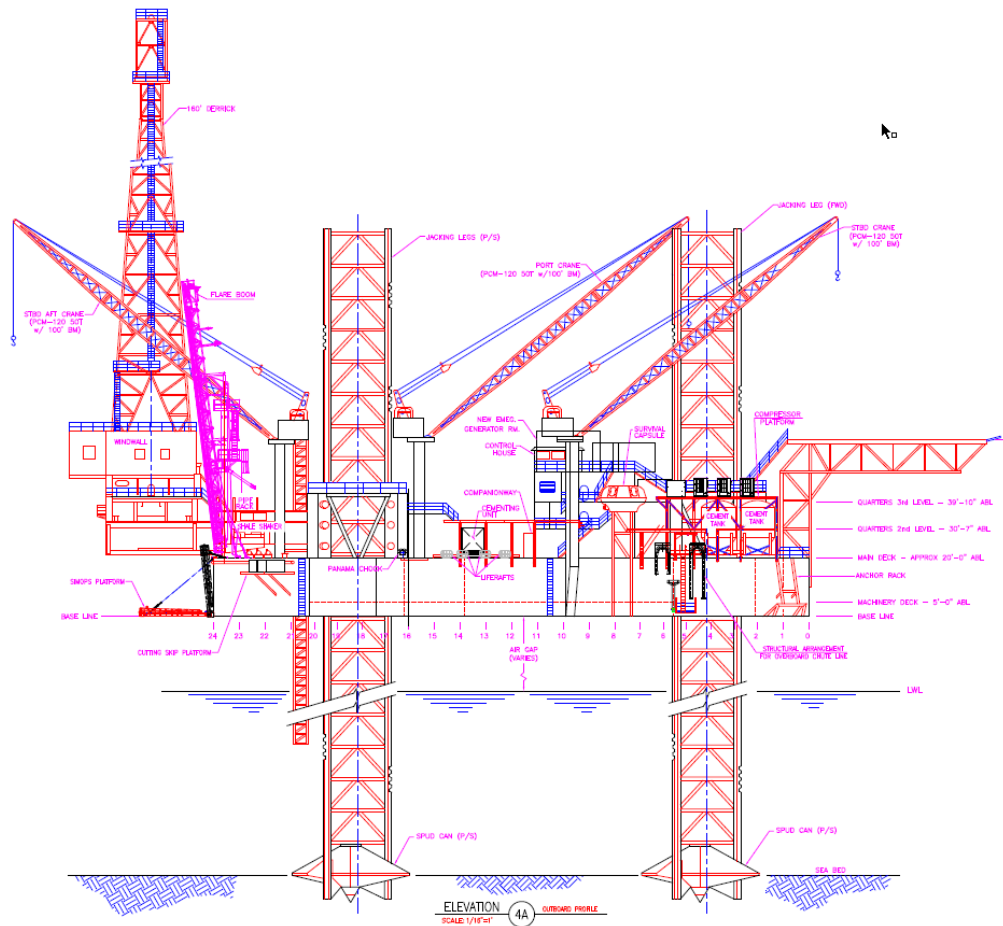
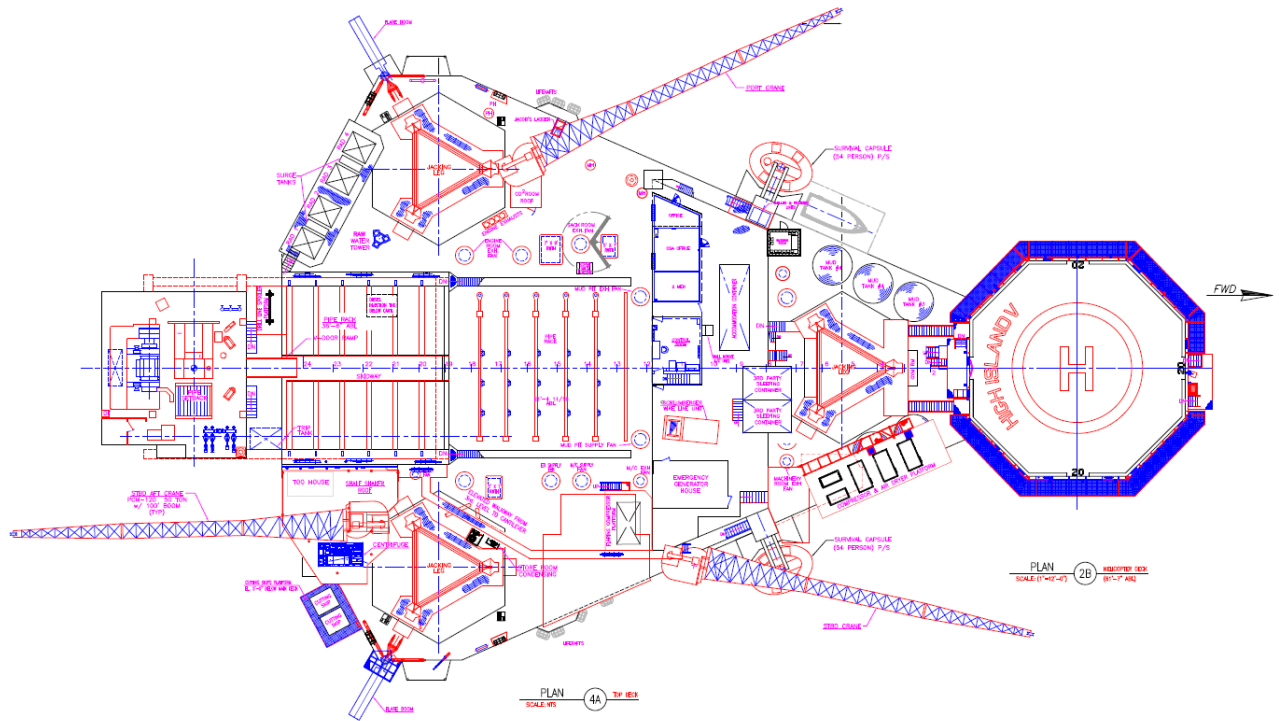
Pedestal Cranes

Three (3) Marathon LeTourneau PCM 120 electric cranes, 100 ft. booms, rated for 50 short tons at 24 ft. radius

R-Nov-2024



These specifications are intended for general reference purposes only, as actual equipment and specifications may vary based upon subsequent changes, the contract situation and customer needs. All equipment shall be operated and maintained at all times, in compliance with Shelf Drilling policies and procedures, and within its stated operational limits or continuous rated capacity, in order to assure maximum operational efficiency.



High Island V

R-Nov-2024



These specifications are intended for general reference purposes only, as actual equipment and specifications may vary based upon subsequent changes, the contract situation and customer needs. All equipment shall be operated and maintained at all times, in compliance with Shelf Drilling policies and procedures, and within its stated operational limits or continuous rated capacity, in order to assure maximum operational efficiency.