



Shelf Drilling Perseverance 400 Foot Jack-Up Drilling Unit

General Description	
Design	Friede & Goldman JU-2000E
Year Built / Last Upgrade	2008
Hull Dimensions	231 ft. x 249 ft. x 31 ft.
Legs (3)	548 ft. long triangular legs
Quarters Capacity	120 persons
Maximum Water Depth	400 ft.
Cantilever Envelope	75 ft. by 30 ft.
Max Variable Load (drilling)	Approx. 14,000 kips*
<i>*depending on water depth and geographical location</i>	

Drilling Equipment	
Derrick	NOV 170 ft x 40 ft x 40 ft, static hook load capacity 1,500 kips with fourteen (14) 1-3/4" lines
Drawworks	NOV SSGD-750-4600-50-82-10.5 AC Drawworks, 4,600 HP rated input power driven by four (4) 1,150 HP motors
Rotary Table	NOV D-495 with hydraulic motor, 49-1/2 maximum opening, rated 1,600 kips (726 MT)
Top Drive	NOV HPS-750-E-AC-IS-KT AC Top Drive 1,500 kips, rated to 64,175 ft.lb. maximum continuous torque (or 96,000 ft.lb. maximum intermittent torque), outfitted with NOV knuckle-link type make-up/break-out system
Pipe Handling	One (1) NOV Hydra-Tong MPT-200 for tubular OD from 3-1/2 in to 9-3/4 in; one (1) NOV Hydra-Racker X-Y; one (1) NOV Hydraulic Mousehole; one (1) NOV Catwalk Machine; one (1) NOV KMCVCTG-1891 Knuckle-boom at cantilever, SWL 3.5 MT to 12 MT
Mud Pumps	Three (3) National Oilwell 14-P-220 triplex pumps 2,200 HP, 7500 psi working pressure, each pump is driven by two (2) AC motors rated 1,150 HP continuous
Solids Control	Five (5) NOV VSM 300 shale shakers; one (1) NOV VSM 300 mud cleaner (mounted on top shaker #1) with 3 ea. 12" desander cones and 12 ea. 4" desilter cones; two (2) NOV Gumbo Master with NOV Flow Divider
Instrumentation	NOV Smart Drilling System (SDI) & BOHR Drill-Pro Cyber-base drilling instrumentation

Storage Capacities	
Liquid Mud (including slug pit)	4,873 bbls.
Base Oil	1,340 bbls.
Brine	1,340 bbls.
Drill Water	13,167 bbls.
Potable Water	4,613 bbls.
Fuel	5,535 bbls.
Bulk Mud (4 silos)	9,000 cu.ft.
Bulk Cement (4 silos)	9,000 cu.ft.
Sack Storage	5,000 sacks

Power Equipment	
Main Power	Five (5) Caterpillar 3516B-HD engines each rated 2,150 HP @ 1,200 rpm and driving Baylor 2,000 kVA AC generators
Power Dist.	Eleven (11) Siemens Master-drives VFD @ 1,200 KW, total maximum continuous power 13,200 KW

Well Control Equipment	
Diverter	Vetco Gray KFDJ 500 Fixed Type Diverter, 27.5" maximum bore; 500 psi working pressure
BOP Stack	18-3/4 in. x 15K BOP stack comprising of two (2) Cameron Type TL double ram preventers and one (1) NOV Shaffer 10K annular preventer
BOP Handling	NOV Hydraulic Lifting Fork, total SWL 125 MT; two (2) x 17.5 MT NOV electric auxiliary BOP service hoists, total SWL 35 MT

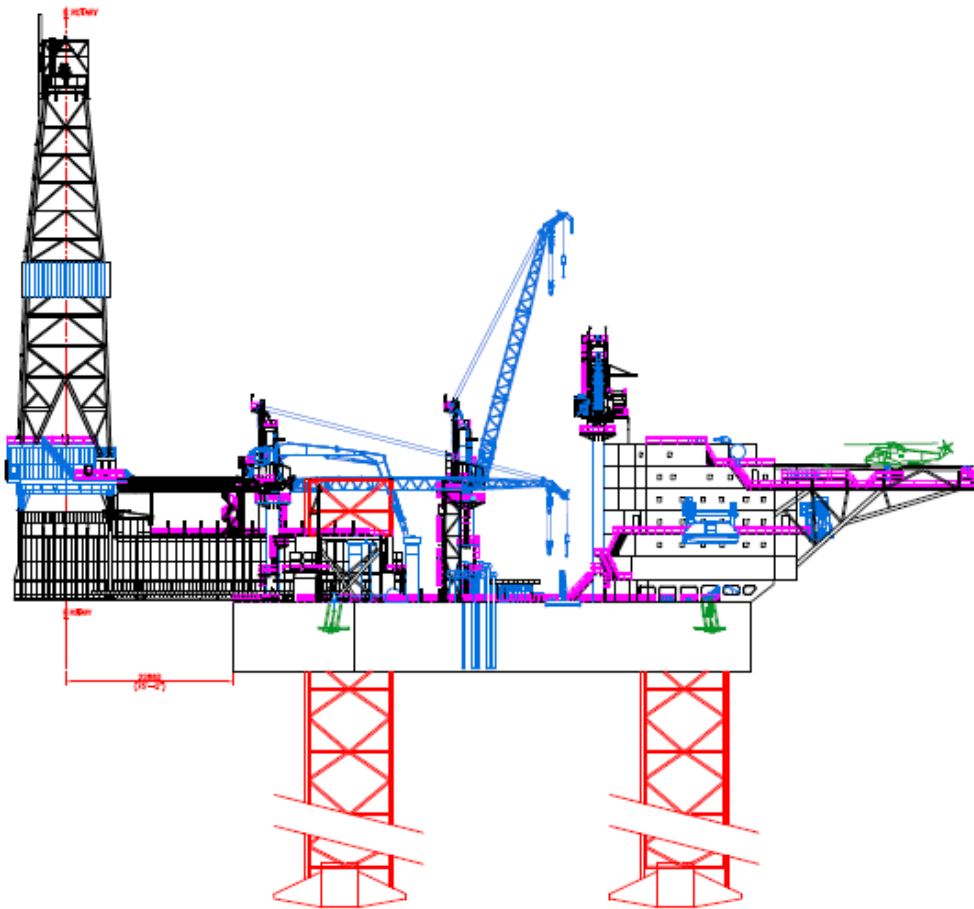
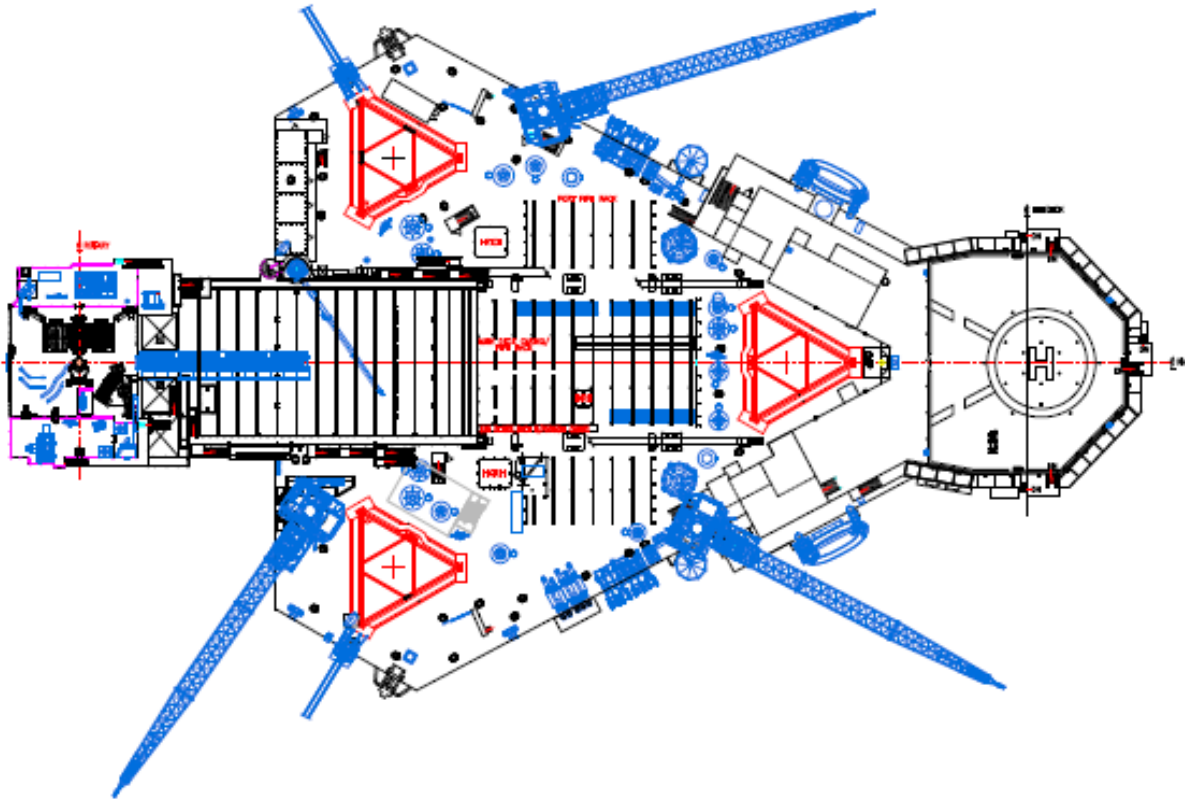
Cranes	
Three (3) Seatrax Model 6024HD pedestal cranes with 122 ft boom rated 50.3 MT at 7 m (23 ft) radius	

Special Features	
MPD (Managed Pressure Drilling) system operational experience. Suitable for harsh environment working areas. UK Safety Case available.	

R-Aug-2024



These specifications are intended for general reference purposes only, as actual equipment and specifications may vary based upon subsequent changes, the contract situation and customer needs. All equipment shall be operated and maintained at all times, in compliance with Shelf Drilling policies and procedures, and within its stated operational limits or continuous rated capacity, in order to assure maximum operational efficiency.



Shelf Drilling Perseverance

R-Aug-2024



These specifications are intended for general reference purposes only, as actual equipment and specifications may vary based upon subsequent changes, the contract situation and customer needs. All equipment shall be operated and maintained at all times, in compliance with Shelf Drilling policies and procedures, and within its stated operational limits or continuous rated capacity, in order to assure maximum operational efficiency.