



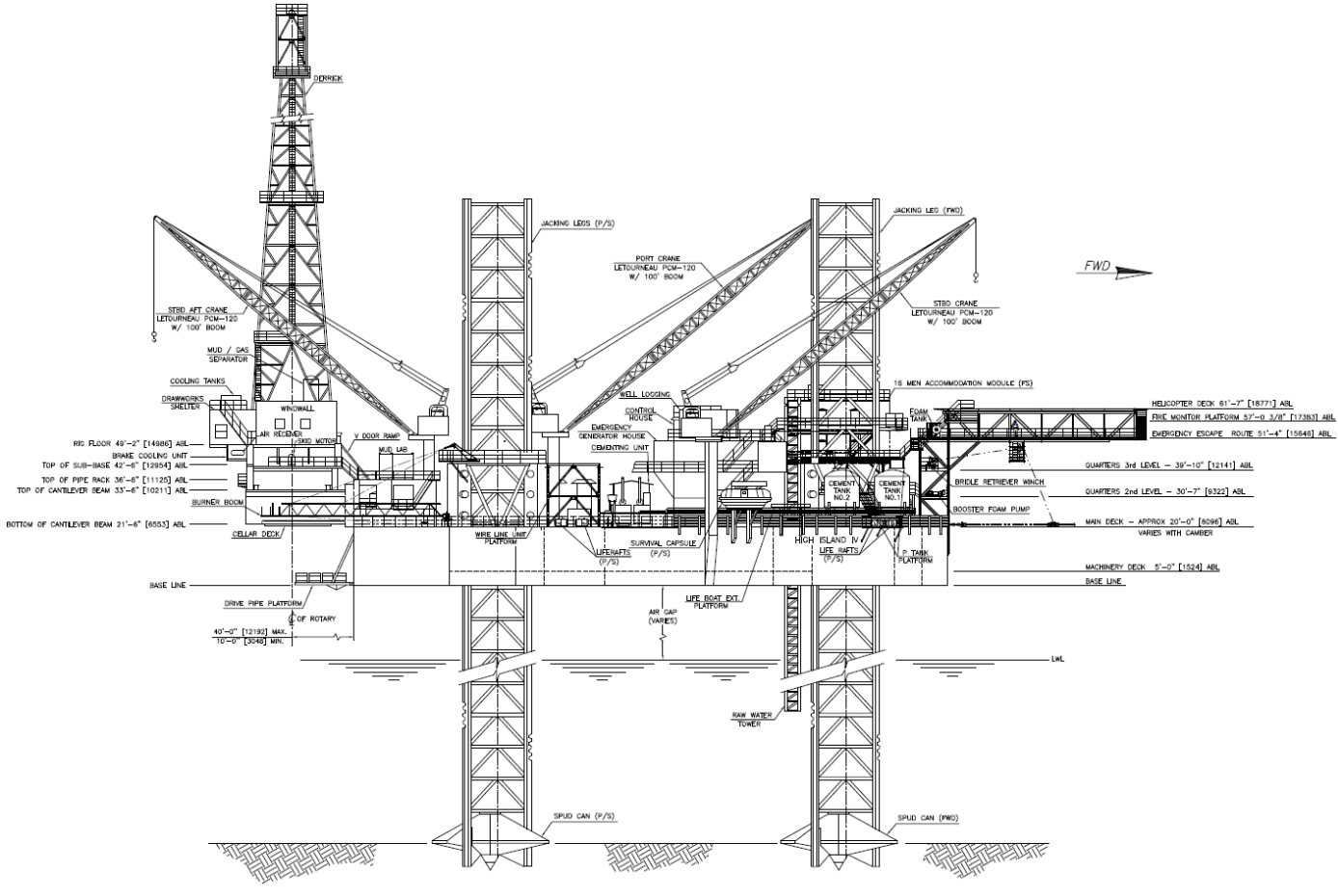
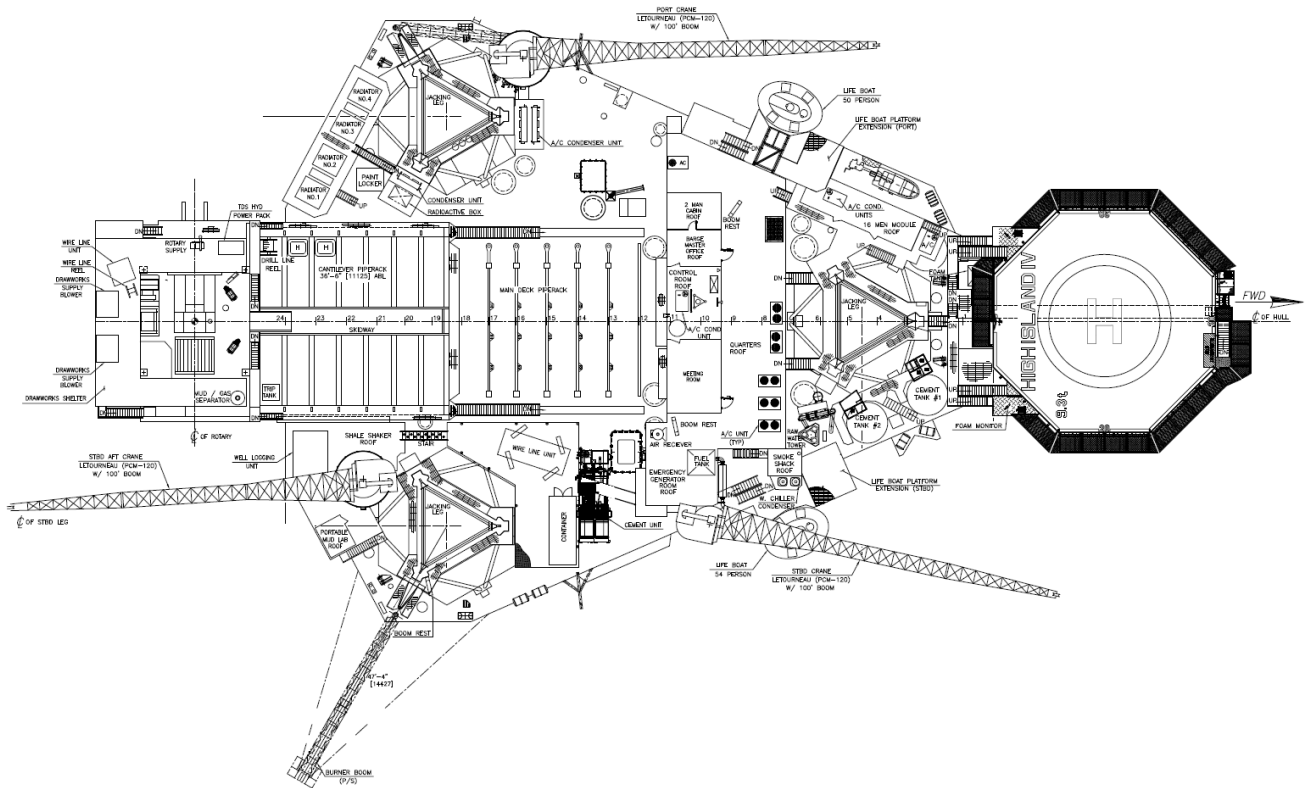
High Island IV 270 Foot Jack-Up

General Description		Storage Capacities	
Design	Marathon LeTourneau 82-SD-C	Liquid Mud	2,249 bbls. (including slug tanks)
Year Built / Last Upgrade	1980 / 2021	Base Oil	932 bbls.
Hull Dimensions	207 ft. x 176 ft. x 20 ft.	Drill Water	6,612 bbls.
Legs (3)	394 ft. long triangular	Fuel	2,287 bbls.
Quarters Capacity	102 persons	Bulk Mud	5,100 cu. ft.
Maximum Water Depth	270 ft.	Bulk Cement	3,400 cu. ft.
Cantilever Envelope	47 ft. by 20 ft. (with 7 ft. extension)	Power Equipment	
Maximum Variable Load (drilling)	Approx. 5,000 kips*	Main Power	Four (4) Caterpillar D-399TA 1,215 HP engines driving four (4) Kato 1,030 KW 600 volt AC generators plus one (1) Caterpillar 3516C engines driving a Kato 1,525 KW 600 volt AC generator
	<i>*depending on water depth and geographical location</i>	Power Dist.	Four (4) Ross Hill SCR units, 1,850 amps each, 750 volts, powering seven (7) drilling motors
Drilling Equipment		BOP Equipment	
Derrick	Continental Emsco 160 ft. x 30 ft. x 30 ft. derrick, static hook load capacity 1,000,000 lbs. with twelve (12) lines	Diverter	Shaffer 21-1/4 in. 2K annular with two (2) 7-1/16" 2K hydraulic gate valves & two (2) 12" discharge lines
Drawworks	National 1320 UE, 2,000 HP rated input power, driven by two (2) GE 752 series DC motors outfitted with Baylor 7838 auxiliary electric brake	BOP Stack	13-5/8 in. 10,000 psi WP BOP stack consisting of one (1) Shaffer LXT double ram preventer, one (1) Shaffer LXT single ram preventer and one Shaffer 13-5/8 in. 5,000 psi WP annular preventer
Rotary Table	National C-375, 37-1/2 in. driven by an independent DC electric motor with two speed gear box	BOP Handling	Four (4) Ingersoll Rand hoists and trolley system, rated to 60 short tons
Top Drive	NOV TDS 3H, 500 short tons, rated to 34,700 ft. lbs maximum continuous torque, outfitted with a Varco PH-85 pipe-handler	Cranes	
Pipe Handling	NOV ST-80 for handling tubular ranging from 4-1/2 in. to 8-1/2 in OD.	Three (3) Marathon LeTourneau PCM-120AS hydraulic electric cranes, 100 ft. booms, rated for 50 short tons at 24 ft. radius	
Mud Pumps	Two (2) National 12-P-160 triplex pumps 1,600 hp, each driven by two (2) GE 752 DC motors, rated to 5,000 psi working pressure	Special Features	
Solids Control	Three (3) Brandt VSM 300 shale shakers plus one (1) Brandt VSM 300 shale shaker equipped with 2 x 12" desander cones and one (1) Brandt Model 24/3 mud cleaner with 24 x 3" cones	A seven (7) ft. cantilever extension is available to increase the cantilever maximum skid out distance to 47 ft.	

R-Jul-2021



These specifications are intended for general reference purposes only, as actual equipment and specifications may vary based upon subsequent changes, the contract situation and customer needs. All equipment shall be operated and maintained at all times, in compliance with Shelf Drilling policies and procedures, and within its stated operational limits or continuous rated capacity, in order to assure maximum operational efficiency.



High Island IV

R-Jul-2021



These specifications are intended for general reference purposes only, as actual equipment and specifications may vary based upon subsequent changes, the contract situation and customer needs. All equipment shall be operated and maintained at all times, in compliance with Shelf Drilling policies and procedures, and within its stated operational limits or continuous rated capacity, in order to assure maximum operational efficiency.